



**Check Point**<sup>®</sup>  
SOFTWARE TECHNOLOGIES LTD

# SECURITY AT HYPERSCALE

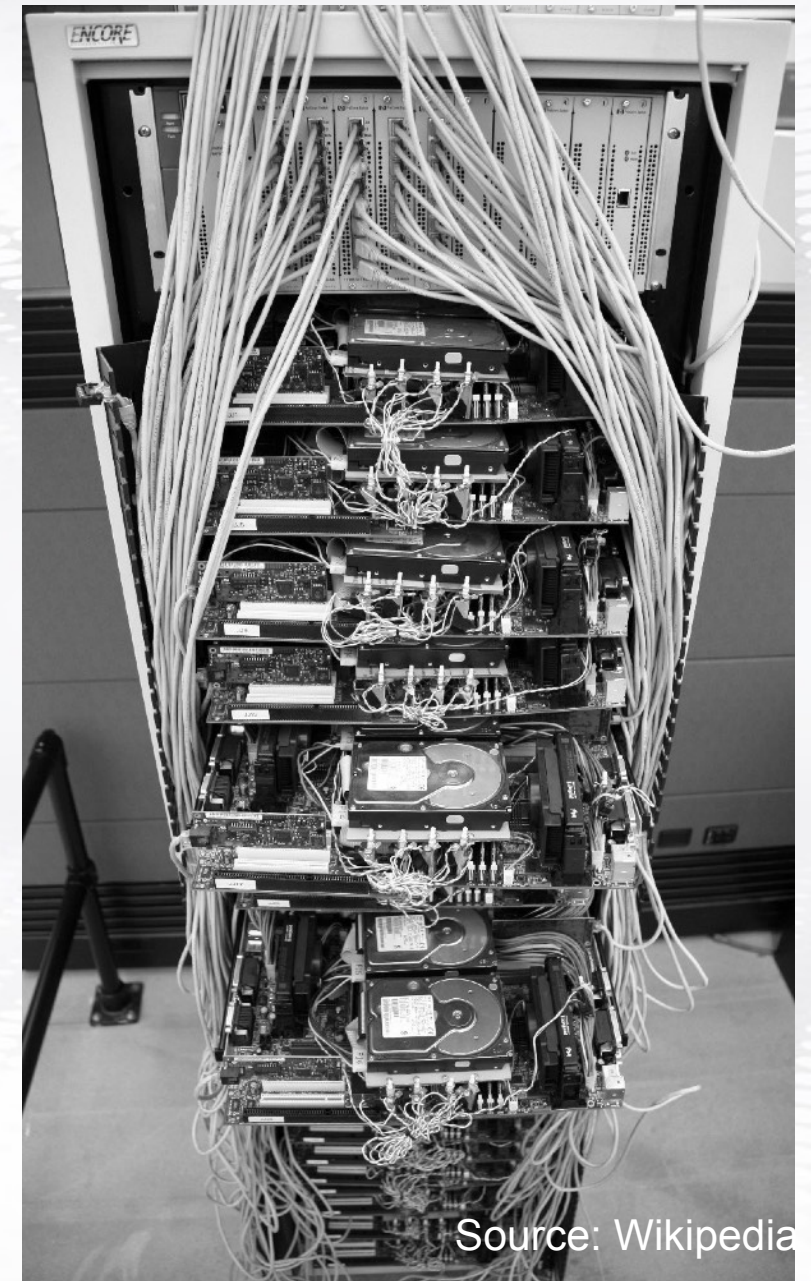
Check Point Maestro

Gomboragcha | Vertexmon

# Google's first server rack

## The Foundation of Cloud Computing

- Multiple cost-efficient compute nodes
- Inter-connected through a network
- SOFTWARE ENABLED SCALABILITY



Source: Wikipedia

Today...

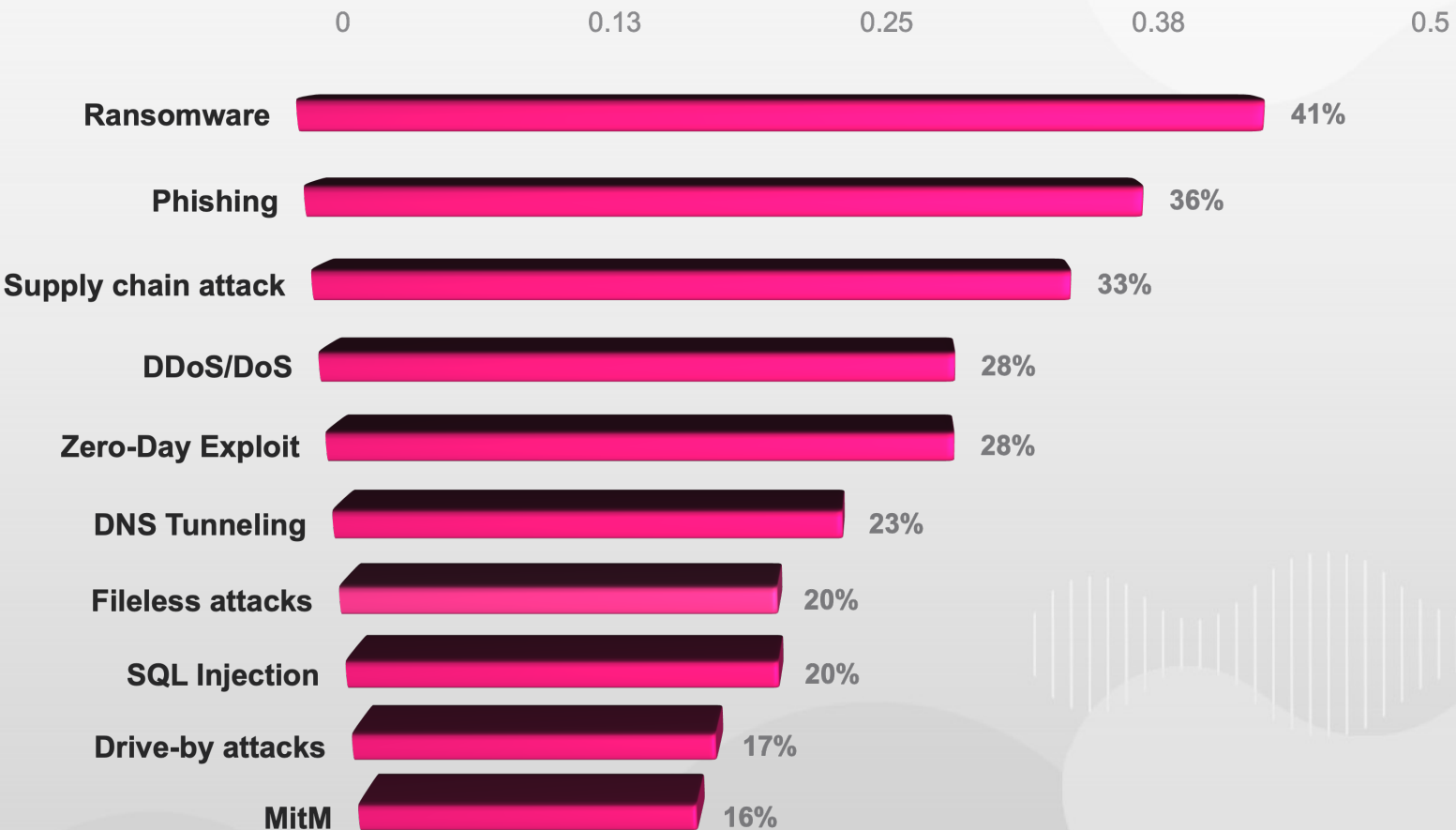
Traffic **DOUBLES**  
Every 3 years

Our Networks Grow up to

**25%** 

*Year Over Year*

# Cyber security threats posing the biggest risks\*

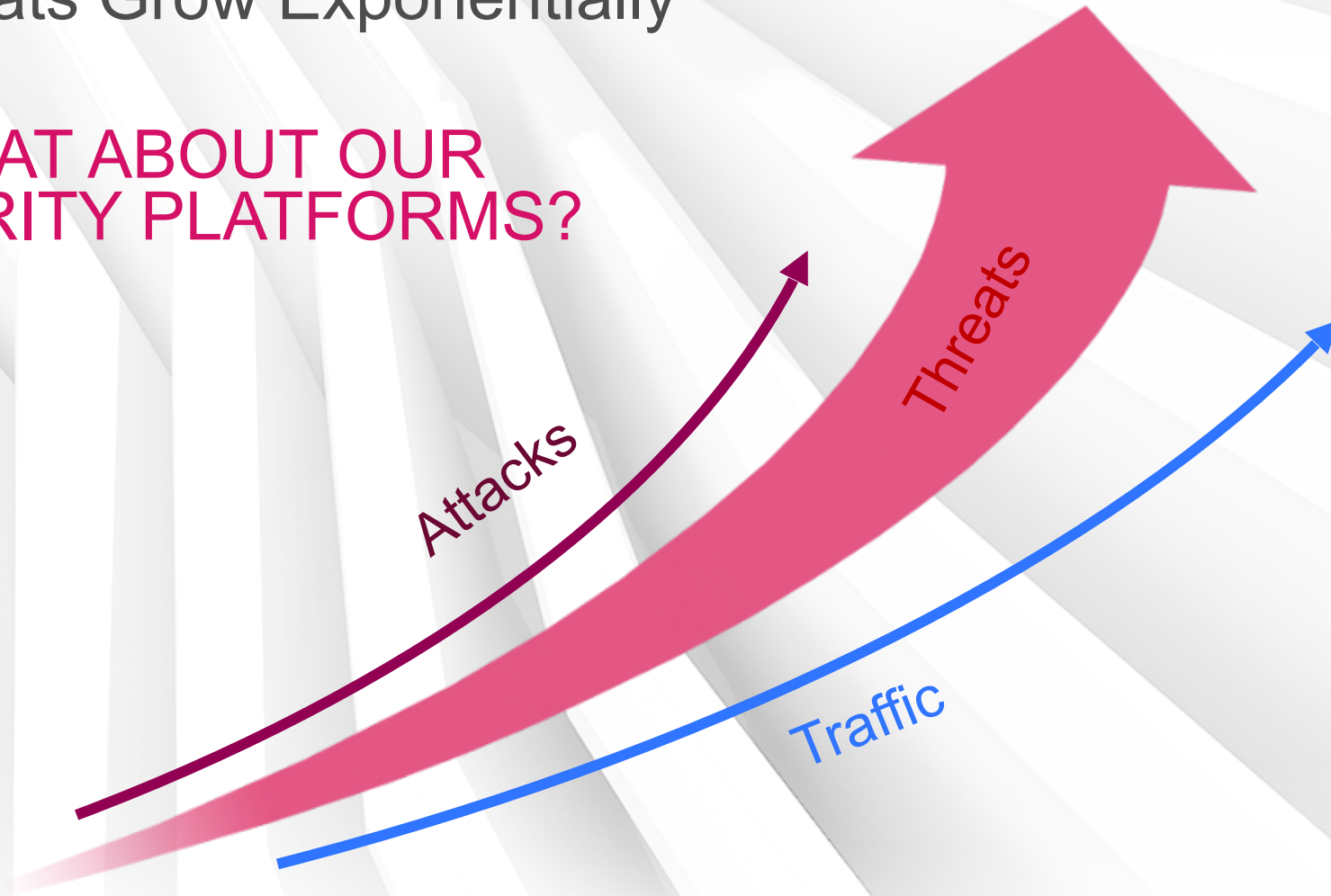


\*2022 security market trends research

# Where Are We?

Cyber Threats Grow Exponentially

WHAT ABOUT OUR  
SECURITY PLATFORMS?





# IMAGINE

That businesses of ALL SIZES can enjoy the power of flexible cloud-level security platforms, easily scale existing gateways, and grow on demand - All while minimizing risk of downtime and maximizing cost-efficiency

Introducing...

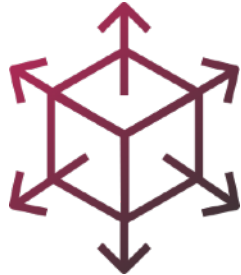
# Check Point Maestro





# The Industry's only Hyperscale Network Security Solution

## Hyperscale



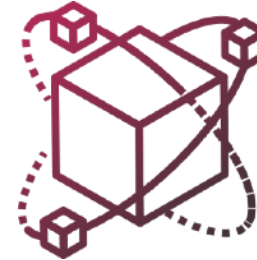
On demand expansion available to gateways of all sizes

## Operations



Opening up new simple ways to architect and manage cyber security

## Resiliency



Delivering the highest standard of resiliency with Telco-Grade technology



# MAESTRO HYPERSCALE ORCHESTRATOR



CONNECTS AND ORCHESTRATES GATEWAYS  
INTO ONE UNIFIED SECURITY SYSTEM

# Scalability has never been so easy!



**MAESTRO**  
**HYPERSCALE ORCHESTRATOR**



**1660HS Security Gateway**

**850 Gbps**



**Up to 52 appliances**

52.8 Gbps

35.2 Gbps

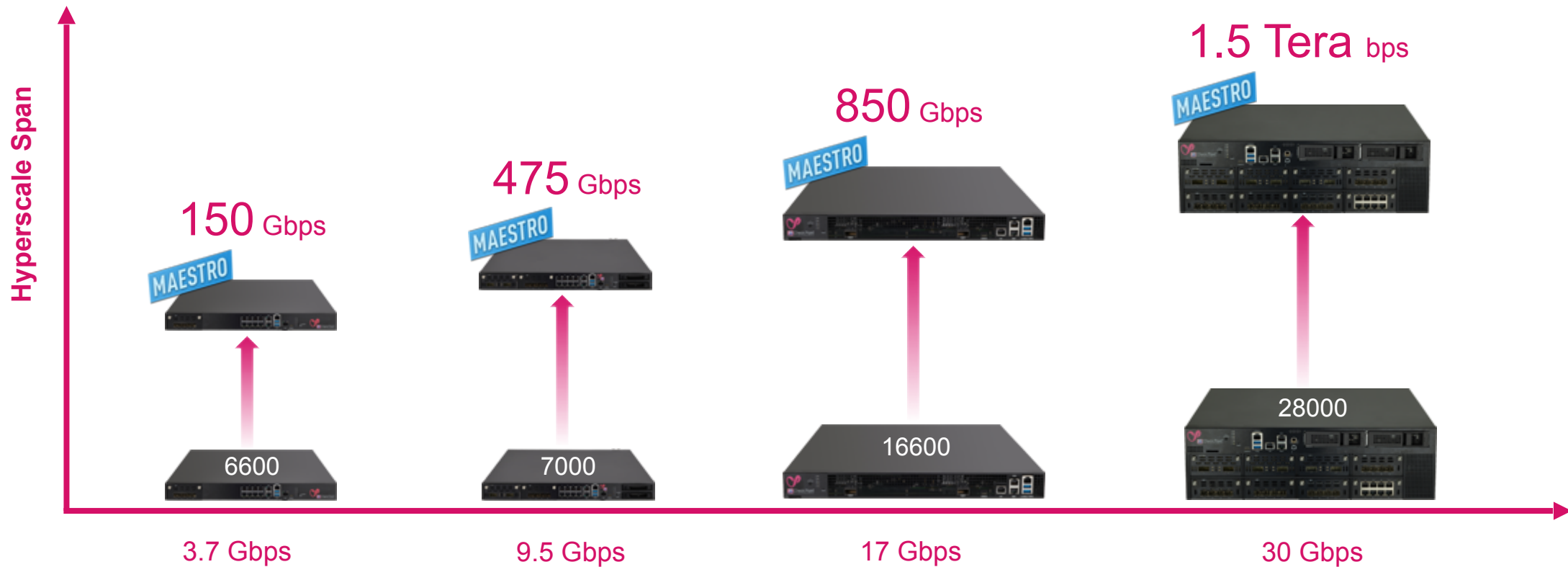
17.6 Gbps

**Threat Prevention**

**Fully Operational within 6 minutes**

# Quantum Leap to Hyperscale

## Converged Power of up to 52 Gateways



# Maestro Clustering

Check Point  
SOFTWARE TECHNOLOGIES LTD

PATENT

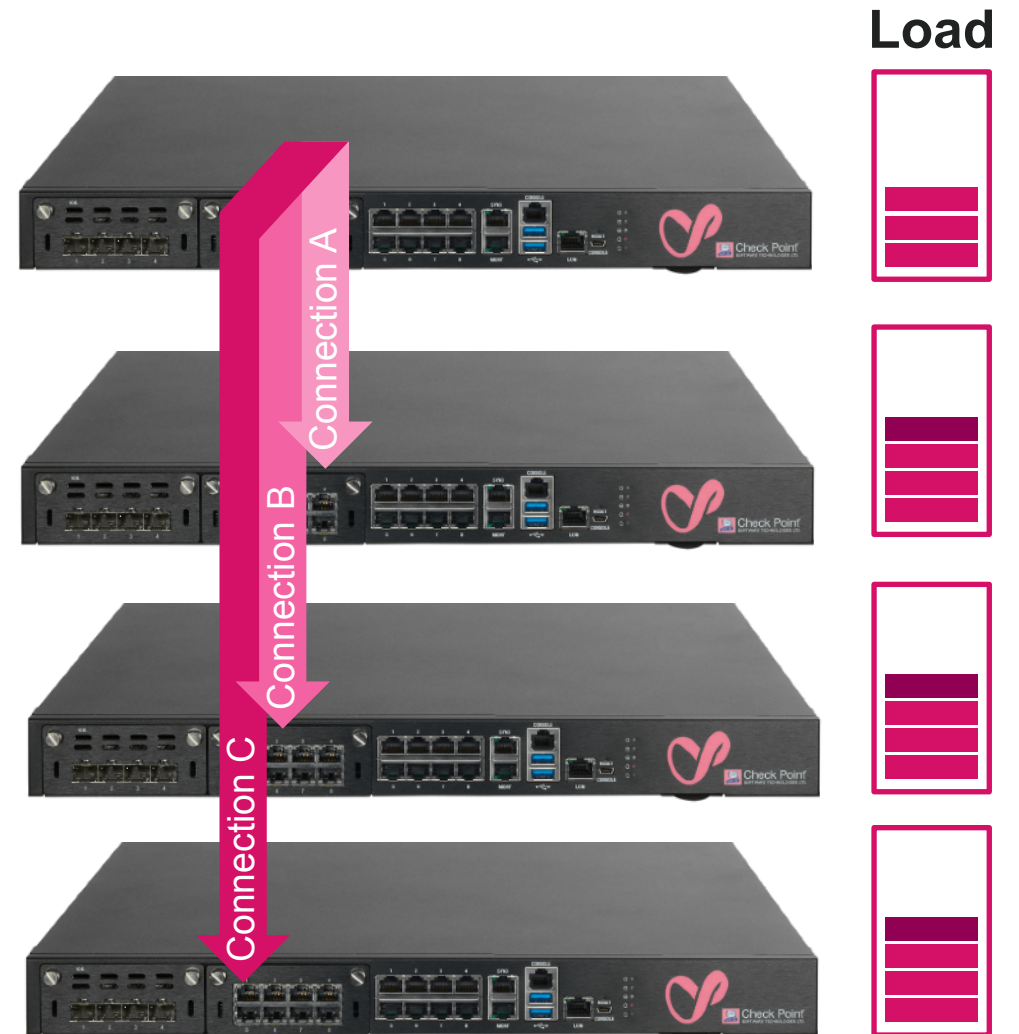
## HyperSync

Cloud-Level Clustering  
Telco-Grade Technology

Full Redundancy within a system

Cost Efficient N+1 Deployment

All Hardware resources utilized



# Welcome to the Future of Network Security Platforms

Standard  
Clustering

Two Devices  
**1 Gbps**



The power of a *single* device.  
The second is just a backup

MAESTRO  
ORCHESTRATION

Two Devices  
**2 Gbps**



**DOUBLE** the performance by load  
sharing with true **LINEAR SCALE**

## Use Cases

# FLEXIBLE SECURITY WITH MAESTRO

# PilotLite™ Robotics Company

## Time to Step Up to Gen V Security

Applications in the Food and Beverage Industry easing daily operations. 1000 employees

Great potential. Wants to continue growing

Ultimately will consume more traffic



NEED A **RELIABLE** SECURITY SYSTEM WITH REAL  
**SECURITY VALUE** THAT THEY CAN **GROW** WITH

# PilotLite™



Planning ahead – Ready for the future



A pair of black-rimmed glasses and a silver pen are resting on a newspaper. The newspaper's text is blurred, but the main headline is sharp and prominent. The headline reads "Breaking News" in a large, bold, serif font. Below it, a sub-headline in a smaller, sans-serif font reads "PilotLite™ Ignites! Acquires the competition for \$275M".

# Breaking News

PilotLite™

Ignites! Acquires the competition for \$275M

# PilotLite™



Active/Active

Within MINUTES accommodate growth needs by adding gateways

# PilotLite™ Robotics Continues to Succeed

**More Offices, More Employees, Larger Cloud Footprint**

Traffic to the cloud continues to grow and requires a separate gateway



**NEED MULTIPLE LOGICAL GATEWAYS  
THAT ARE EASY-TO-OPERATE**

# PilotLite™



OFFICES

CLOUD TRAFFIC

Gateway Consolidation

Manage multiple logical gateways based on a **SINGLE SYSTEM** for MAXIMUM EFFICIENCY

# PilotLite™



Leverage the Orchestrator  
RESTful API



OFFICES



CLOUD TRAFFIC

AUTO-SCALING

Auto-Scaling

Dynamically Allocate resources between  
Multiple Security Groups in real-time

TO SUMMARIZE

# Check Point **Maestro**

## The Industry's only Hyperscale Network Security Solution

-  Easily Scale in minutes
-  Cost-Efficient and Simple Operations
-  Cloud-Level Resiliency on-premises





**Check Point**<sup>®</sup>  
SOFTWARE TECHNOLOGIES LTD

**THANK YOU**